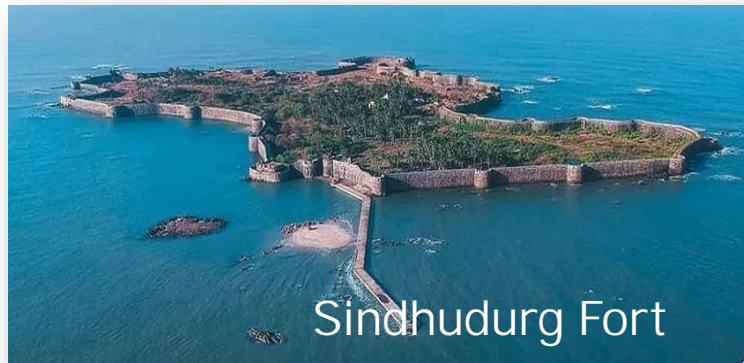
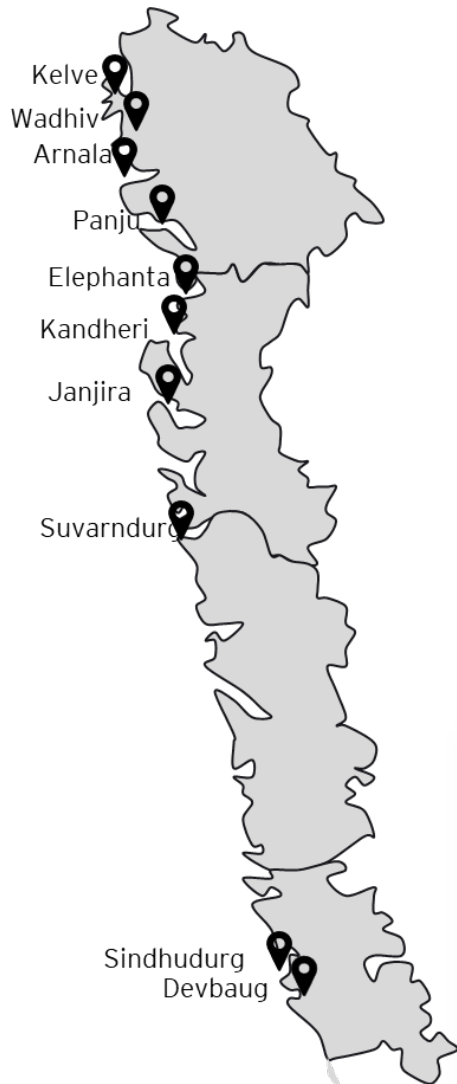


An aerial photograph of a coastal area. In the foreground, a dark, forested landmass is partially obscured by a large black diagonal overlay. To the right, a green, hilly peninsula with a red soil cliff face meets the ocean. In the background, a body of water separates the peninsula from a distant, hilly coastline. A yellow geometric shape is in the top left corner, and a yellow vertical bar is on the left side.

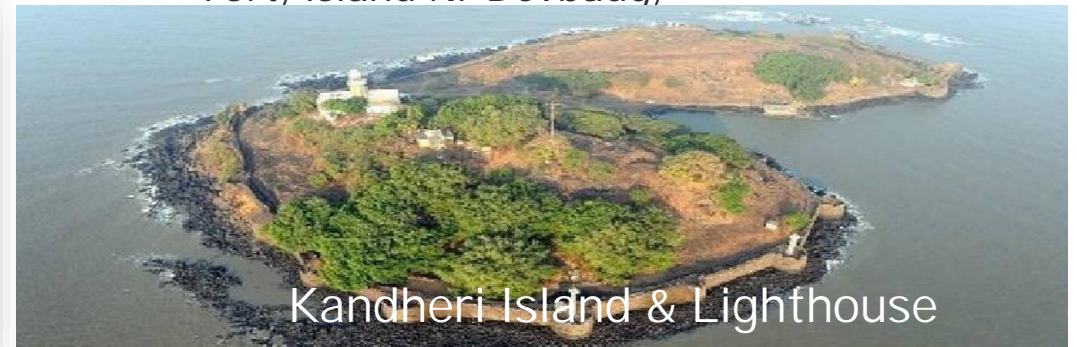
Island Development Authority

# Island Development Authority

## Islands in Maharashtra



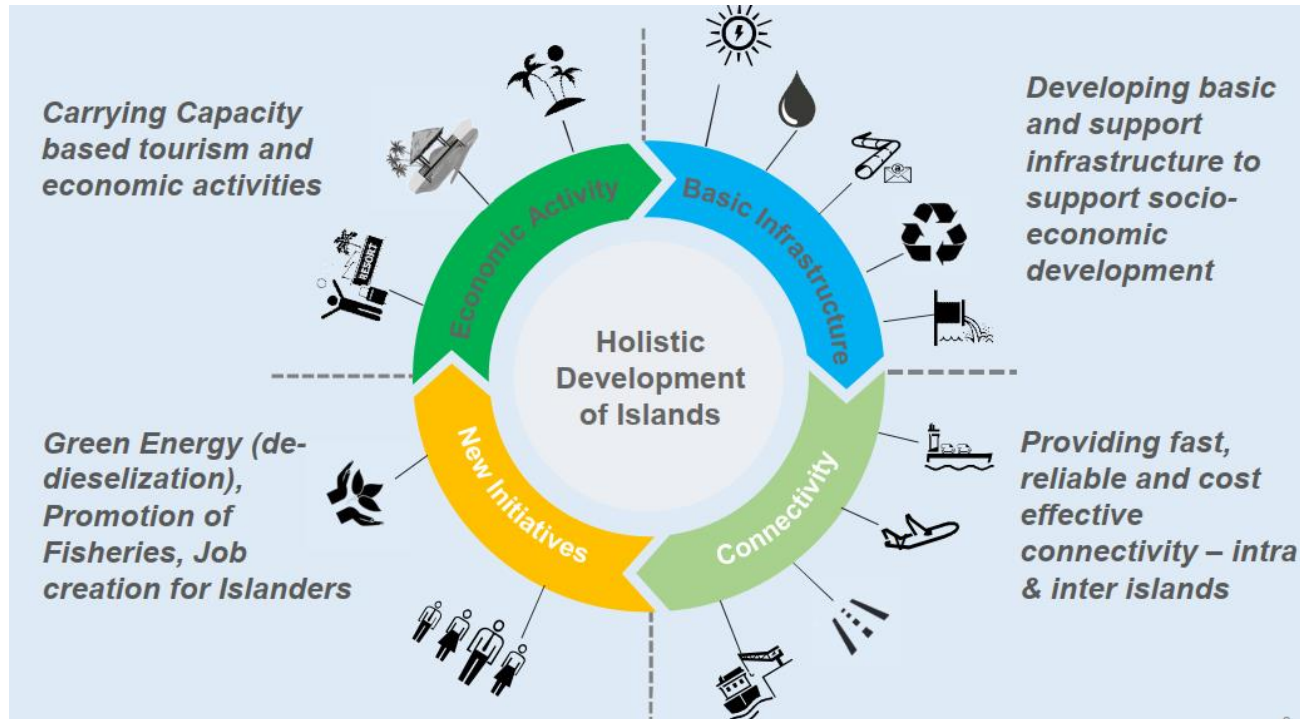
- Maharashtra has a *rich, pristine coastline of about 720 km*, Also known as *Konkan Coast* from *Palghar to Sindhudurg*
- There are *about 62 islands* in Maharashtra
- Some key Important islands in Maharashtra based on type
  - *Sea Fort Islands: Elephanta, Sindhudurg Fort, Janjira Fort, Harnai (Suvarnadurg) Fort , Arnala Fort, Kandheri Fort*
  - *Creek Islands : Panju Island, Vadhiv, Kelve Fort, Island Nr Devbaug,*



# 4. Island Development Authority

## Setting up of Maharashtra Holistic Island Development Authority (MHIDA)

- With primary focus on Holistic development of various islands, *Maharashtra Holistic Island Development Authority (MHIDA) can be set up*



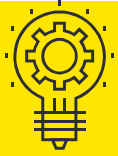
### Expected Output

- 1** Economic Development
  - Creation of jobs
  - Increase in tourist footfalls
  - Increase in per capita income
- 2** Infrastructure Development
  - Enhanced air, sea and web connectivity
  - Access to uninterrupted power, safe drinking water,
  - Eco-friendly waste management practice
- 3** Environment management
  - Ecological balance and environment sustainability
  - Disaster preparedness and management
- 4** Others
  - Protection of interests of locals
  - Security of islands
  - Eco friendly technologies, renewable energy, solar projects, etc



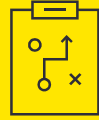
# Island Development Authority

## *Key initiatives to be taken up*



### Institutional structure

- Setting up of MHIDA
- Formulate interdepartmental working group committee
- Policy initiatives and incentives



### Island Development Plan cum Strategic Road map for islands

- Mapping and Baseline study
- Existing Situation Analysis and infrastructure gap assessment
- Plans and Proposals
- Project identification and shortlisting



### Technical studies of shortlisted islands / projects

- Development potential of islands
- Master Planning
- Assessment and implementation of Tourism Carrying Capacity
- Project structuring and bid process management



### Project Implementation and Monitoring

- Develop infrastructure -
- Set up MIS portal/ interactive dashboard
- Prepare project profiles, project information memorandums
- Investor outreach

*Proposed Islands that can be taken up for tourism development : Elephanta Island, Panju Island*