



A divine journey

Ashtavinayak pilgrimage
in Maharashtra

It is a journey of hope for countless devotees of Lord Ganesha, the elephant-faced God revered as a protector and remover of obstacles. The Ashtavinayak Yatra (Ashta means 8 and Vinayak is another name for Lord Ganesha) takes the faithful to eight abodes of the Lord in Pune, Ahmednagar and Raigad districts. The idols in all the eight ancient temples were discovered in the 'Swayambhu' form, which means they are natural sculptures. They were consecrated in temples built in the regions where they were found and came to be known as 'Ashta Vinayak'. The pilgrimage starts and ends at Morgaon and typically spans three days and 2 nights. It is conducted during the Marathi months of Bhadrapad maag and Jyeshtha maag (August end to mid-September) and is one of the most annual popular pilgrimages.

Morgaon (Shri Moreshwar) | Pune District

The deity is in the form of Ganapati Mayureshwar or peacock rider Ganesha. Seated facing east with his trunk to the left, the idol is adorned with vermilion. There are diamonds in its eyes and navel and a Nagaraja hood on its head. He is flanked by his consorts, Siddhi and Buddhi.

Getting There

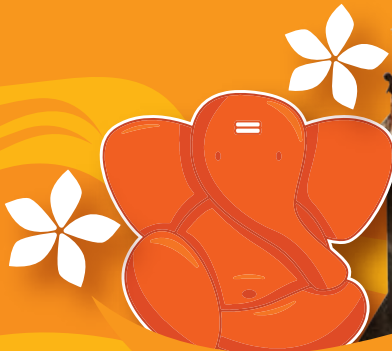
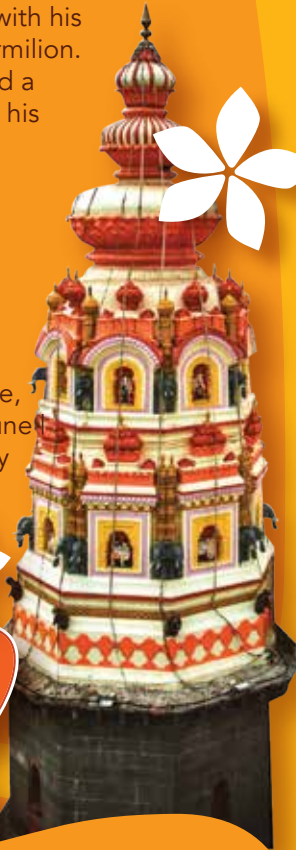
By Air: Pune (67 kms)

By Rail: Jejuri (17 kms)

By Road: Morgaon Bus Stand (450 metres)
Pune (66 kms)

Other must-visit attractions

Khandoba Temple, Jejuri | Prati Balaji Temple, Ketkawale | Purandar Fort | Mastani Lake, Pune | Bhuleshwar Temple | Bhigwan Bird Sanctuary



Siddhatek (Shri Siddhivinayak) Ahmednagar District

The second stop on the Ashtavinayak pilgrimage, Siddhivinayak is said to grant Siddhi or spiritual power to devotees. Despite the lack of a paved road and an abundance of thorny bushes, believers circumambulate the hillock seven times to propitiate the deity.

Getting There

By Air: Pune (88 kms)

By Rail: Duand (18 kms) Pune (103 kms)

By Road: Duand (19 kms) Morgaon (66 kms)

Other must-visit attractions

Morgaon Temple | Bhigwan Bird Sanctuary |

Rehekuri Blackbuck Sanctuary



Pali (Shri Ballaleshwar) | Raigad District

The temple was built in 1640 AD. One of its noteworthy features is a bell that was offered by Chimaji Appa, the brother of Bajirao Peshwa. The original wooden temple was replaced by a stone structure in 1760. It was designed by Nana Fadnavis, a brilliant statesman-administrator of the Peshwa era. The temple is behind Sarasgad Fort and in the mornings, the light shines on the deity, illuminating him. This is the third stop for devotees during the Ashtavinayak Yatra.

Getting There

By Air: Mumbai (75 kms), Pune (93 kms)

By Rail: Hamarapur (4 kms), Kasu (14 kms), Pen (41 kms),

Panvel (67 kms), Kurla Terminus (98 kms),

Chhatrapati Shivaji Maharaj Terminus (105 kms),

Pune (123 kms)

By Road: Panvel (35 kms), Mumbai (68 kms),

Pune (89 kms), Siddhatek (214 kms)

Other must-visit attractions

Sarasgad Fort | Sudhagad Fort |

Kolad river rafting | Korigad Fort, Pune



Mahad (Shri Varadvinayak) | Raigad District

It is believed that the deity fulfills the wishes of devotees who chant his name. The fourth temple in the pilgrimage, it is famous for Nandadeep, a lamp that illuminates the temple with its glow. The original idol is outside the sanctum, while a new idol has been consecrated inside.

Getting There

By Air: Mumbai (75 kms), Pune (93 kms)

By Rail: Khopoli (7 kms), Karjat (15 kms), CSMT (75 kms), Pune (89 kms)

By Road: Pali (38 kms), Mumbai (68 kms), Pune (82 kms)

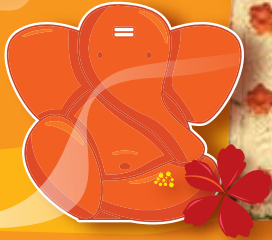
Other must-visit attractions

Lonavala- Khandala | Umbarkhind, Pune |

Irshalgad, Raigad | Dukes Nose, Pune |

Zenith Waterfall, Khopoli | Kune Falls, Pune |

Mandap Waterfall, Raigad



Theur (Shri Chintamani) | Pune District

Chintamani Temple, the fifth in the pilgrimage, symbolizes peace and freedom from worries. The idol faces east with its trunk angled left, adorned with carbuncles and diamonds. The temple's main archway faces north. The wooden temple hall features a black stone fountain.

Getting There

By Air: Pune (22 kms)

By Rail: Nashik (21 kms)

By Road: Pune (52 kms), Mahad (109 kms)

Other must-visit attractions

Dagdusheth Halwai Ganpati Temple Pune |

Saswad, Pune | Ramdara Temple, Pune |

Shri Wagheshwar Temple, Pune |

Shaniwarwada Pune, Pune |

Vishrambag Palace, Pune





Lenyadri (Shri Girijatmajavinayak) **Pune District**

Lenyadri literally means 'mountain cave'. Mentioned in the Ganesha Purana and Sthala Purana, it is the sixth temple that devotees visit. The Girijatmaja idol faces east with its trunk turned left. The temple is carved from a single stone. It also features a large sabha mandap.

Getting There

By Air: Pune (12 kms), Mumbai (154 kms)

By Rail: Talegaon (88 kms), Pune (103 kms)

By Road: Pune (96 kms), Theur (113 kms)

Other must-visit attractions

Shivneri Fort | Naneghat | Malshej Ghat |

Tulja Buddhist Caves, Pune | Bhimashankar

Temple & Reserve



Ozar (Shri Vigneshwara) | Pune District

The seventh temple in the revered pilgrimage, it is believed that Lord Ganesha killed a demon named Vigneshwara here, hence the name Vigneshwara Vinayak. The temple also has an idol of a mouse, believed to be Ganesha's vehicle.

Getting There

By Air: Nashik (24 kms), Mumbai (159 kms), Pune (169 kms)

By Rail: Nashik (21 kms)

By Road: Lenyadri (15 kms), Pune (145 kms), Mumbai (195 kms)

Other must-visit attractions

Kukdeswar Temple | Habshi Mahal, Junnar | Harishchandragad, Ahmednagar





Ranjangaon (Shri Mahaganapati) **Pune District**

The eighth temple in the Ashtavinayak Yatra, this holy place is associated with Ganesha aiding Shiva in his battle against the demon, Tripurasura. The idol is seated cross-legged on a lotus and flanked by his consorts. The temple design allows the sunlight to fall directly on the idol, illuminating it.

Getting There

By Air: Pune (50 kms)

By Rail: Nashik (21 kms)

By Road: Pune (52 kms), Ozar (65 kms)

Other must-visit attractions

Chhatrapati Sambhaji Maharaj Memorial, Shikrapur |
Potholes of Nighoj, Ahmednagar | Ralegan Siddhi,
Ahmednagar | Hivrebazsar, Ahmednagar



For More Information

Head Office No: 022 69107600, Konkan: 022-20876416 / 27560002,
Nagpur: 0712-2533327, Pune: 020-29900289
Chhatrapati Sambhajnagar: 0240-2990457, Amravati: 0271-2661611
Nashik: 0253-2995464

To know more:

Send **ASHTAVINAYAK** to +91 94038 78864.

Follow us on:

MaharashtraTourism @maha_tourism maharashtratourismofficial
 diot@maharashtratourism.gov.in www.maharashtratourism.gov.in

For Booking and Reservations

booking.maharashtratourism.gov.in

